



Artstudio Pro: Draw Paint Edit

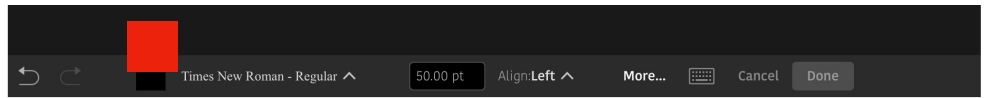
Drawing, Painting, Image Editing

Presented by Win Nielsen and Thea Hall



Using the Text Tool->

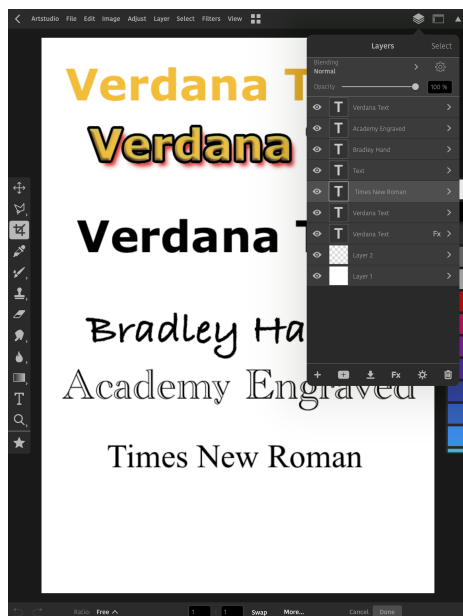
Select the Text Tool from the Toolbox on the left of screen to show several text editing options at the bottom of screen.



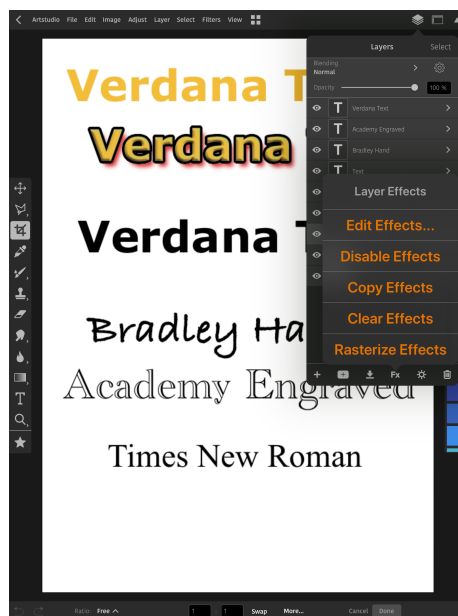
The “more” button will show a box with the same options.

Tap in the document at approximately where you want to place the text. A small box will open for text to be typed into. Use the delete key on the keyboard to delete the word “text” in the box, then type desired text. The text will show in a new layer each time the text tool is used. To edit the text, select it’s layer and use the several different options available.

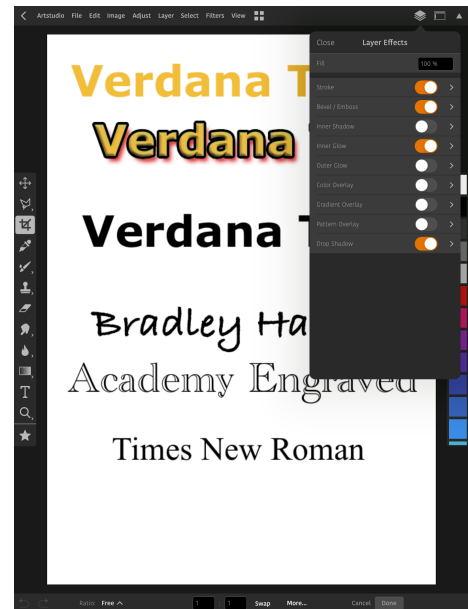
Edit—>Transform or FX at bottom of Layers. Tap on Fx to open the many editing options available, such as Stroke, Emboss, Inner Glow, Drop Shadow etc.



Text Layers



Edit Effects



Edit Effects Options

To copy text effects of one layer to another, tap on FX in the layer, choose “Copy Effects” then select the other text layer and tap FX at the bottom of the layer and choose “ Paste Effects”.